



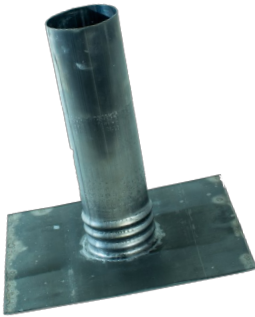
MAYCO INDUSTRIES



800-749- 6061

www.maycoindustries.com

ROOFING & PLUMBING

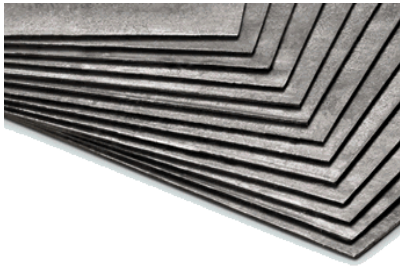


Mayco's **MULTI-PITCH LEAD ROOF FLASHINGS** are made from the highest quality and longest life materials; ideal for all types of roofing applications. Available in 2.5# and 4# weights and 1.5", 2", 3", 4", 5" and 6" pipe diameters. Flexible up to approximately 14 degrees.

SHEET

LEAD is ideal for building, industrial, water proofing and shielding requirements.

Rolls are available from 6" to 96" widths and up to 25 ft. lengths. Most commonly seen in the roofing industry as 2.5 lb. and 4 lb. squares, we offer flat, rolled and rolled and wrapped.



Flat 30" x 30" and 36" x 36" squares available for same day shipping.

CUSTOM LEAD FLASHINGS

are made from the same high quality material. Specifically made to your specifications to meet federal, state, city and county flashing code requirements. These flashings can be manufactured to fit any roof pitch up to 16/12 pitch. Custom flashings are available in adjustable sizes as well.



MayCoat™ POLYMER COATED FLASHINGS

have the most durable, longest lasting coating available. The unique chemical properties of the Maycoat™ polymer based compound provide unsurpassed UV corrosion protection when installed outdoors or exposed to sunlight and other UV producing environments.

This means an extra layer of protection for long-term exposed installations. Available in gray and black.



LEAD CAPS Also known as "repair caps" are designed to fit on top of existing boots or vent pipes. Available in 1.5", 2", 3", and 4".

Use as a professional finishing touch or as a quick repair for minor pipe damage such as that caused by rodents. Available with MayCoat™.

	2.5 lb.	4 lb.
30" X 30"	15.625 lbs.	25 lbs.
36" X 36"	22.5 lbs.	36 lbs.
12" X 20'	50 lbs.	80 lbs.
12" X 21'	52.5 lbs.	84 lbs.
18" X 20'	75 lbs.	120 lbs.
18" X 21'	79 lbs.	126 lbs.
48" X 20'	200 lbs.	320 lbs.

Other products available include: **GUTTER OUTLETS, LEAD WOOL, BENDS REPAIR COLLARS, LEADED T'S AND LEAD WEDGES**



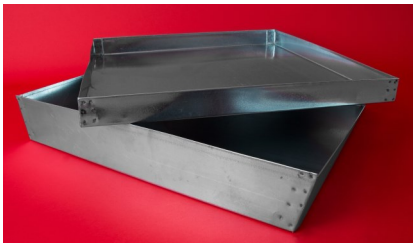
Call today for pricing and availability!

Mayco Industries is the largest fabricator of lead based products, other than batteries, in the United States. Mayco operates two manufacturing plants and six distribution centers on a nationwide basis in all regions of the United States, thus reducing freight costs and delivery times. Our Birmingham, Alabama location houses the *world's largest lead alloy rolling mill* for sheet lead production.

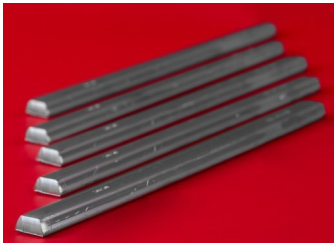
Other Products Include: Ammunition * Anodes * Flat & Interlocking Bricks * Ballast * Bridge Weights * Hot Pours * Lead Lined Drywall & Plywood * Lead Glass & Frames * Lead Sheet & Plate * Machined Products * Exclusive Manufacturer of Lawrence Brand Lead Shot



ALL PRODUCTS ARE PROUDLY MADE IN THE USA



GALVANIZED HOT WATER HEATER PANS are hand crafted from 24 gauge galvanized steel. 2" and 4" deep sizes protect against heater failure and water damage. Available in square sizes 20", 22", 24", 26", 28" and 30". 1" fittings included. Specify with or without pre-drilled holes for your installation needs. Other sizes available upon request.



SOLDER & BABBITT is offered in a variety of sizes and alloys. We offer solder in 1 lb., 5 lb., and 25 lb. spools and 1/4 lb., 1/3 lb., 1/2 lb., and 1 lb. bars. Standard alloys include 40/60, 50/50, 60/40, but other alloys are available upon request. Babbitt available in 50 lb. cartons of #3, #4, #7 & Genuine A Grade 2.

50 lb. cartons of 50/50 solder bars, 50/50 1 lb. spools and #4 Babbitt available for same day shipping.

INGOT LEAD is manufactured in 25 lb. strings, consisting of 5 lb. sections. Mayco Ingot lead is pure and easy to work with. We also offer larger chunks of **PIG LEAD** in 50 to 100 lbs. pieces in various alloys.



Small quantities of ingot lead are available for same day shipping.



GALVANIZED HOT WATER HEATER STANDS

are made from 16 gauge galvanized steel, with a 18" X 18" top and 17" tall. Easy installation, no bolts or screws. Packaged 1 per box.



Mayco's **AUTO-CAULK** flexible seal is die-formed to flashings. Available in **GALVANIZED, ALUMINUM,**

NEO-POLY & COPPER they are completely waterproof and leak-proof. Adjustable to most pitched roofs.. Available in 1.5", 2", 3", & 4" or two space saving combo sizes 1.5", 2", 3" combo and a 3" & 4" combo. Not for hot mop applications. Copper flashings are made from 16 oz. copper with a EPDM rubber collar. Copper auto-caulks are only available in combo sizes. All auto-caulks are packaged 12 per carton.