

Radiation Shielding Products

MAYCO Industries has been supplying radiation-shielding materials to the medical and industrial community for over 30 years. We offer shielding products and services for both therapy and diagnostic applications including design, fabrication and installation of neutron-shielding doors and interlocking lead brick wall and ceiling systems and borated polyethylene. We also manufacture and distribute a full line of diagnostic materials including lead lined wood doors, lead lined gypsum board, lead oxide glass and sheet lead. Lead and some of its alloys are generally the most cost effective shielding materials to protect against the effects of gamma rays and x-rays. The properties of lead which make it an excellent shielding material are its density, high atomic number, high level of stability, ease of fabrication, high degree of flexibility in application and its availability.



Interlocking Lead Bricks

Lead Brick - Available in flat and interlocking "V" form, rectangular, curved/circular interlocking or custom shapes in pure, low background, chemical and custom alloys. Interlocking forms are easier to erect, modify and relocate walls and cells of any size. Custom sizes are available per customers' drawing for walls and hot cell bricks (i.e. 4"x4"x4"). MAYCO interlocking lead bricks are tongue and grooved on four edges.

Available sizes: 3/4" x 4" x 12", 1" x 4" x 12", 1½" x 4" x 12", 2" x 4" x 8", 2" x 4" x 12" and 2½" x 4" x 12". Designed for high energy radiation shielding.

Flat Cut Bricks

2" x 4" x 8"

2" x 4" x 6"

Structural Laminated Steel Plate

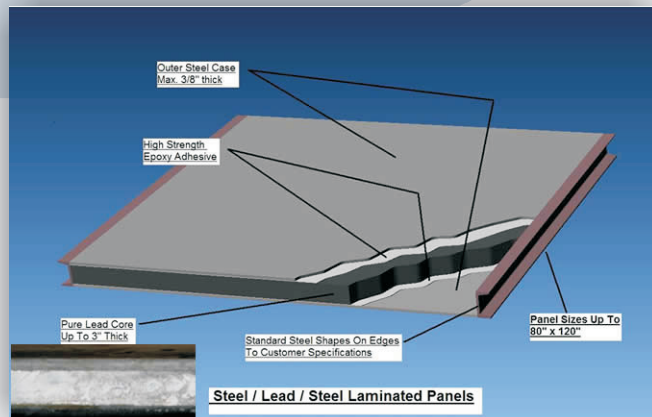
Used in specific applications where heavy lead shielding is required and steel is required for integrity.

Some additional applications for our sheet lead & lead bricks are:

- Proton Therapy
- I.M.R.T.
- H.D.R
- Linear Accelerator Vaults
- Nuclear Medicine
- Neutron Shielding
- Instrumentation Shielding
- Cobalt Shielding

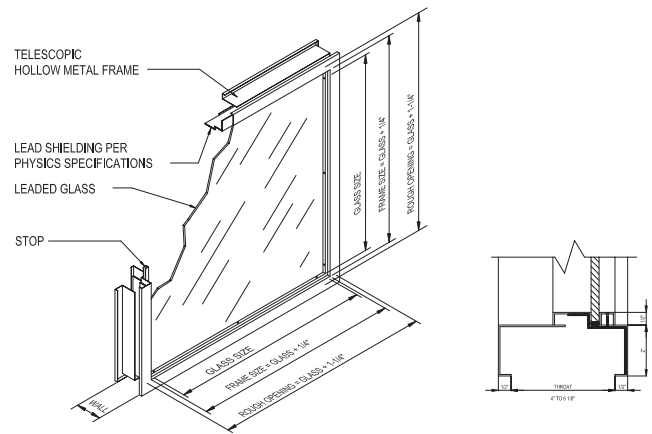
Borated Polyethylene Neutron Shielding has long been used as medical and industrial neutron shielding. Borated Polyethylene is a light-weight, cost effective and easily fabricated solution for a wide variety of neutron-shielding needs.

With a 5% boron by weight, Industrial Grade is effective in medical and other applications.



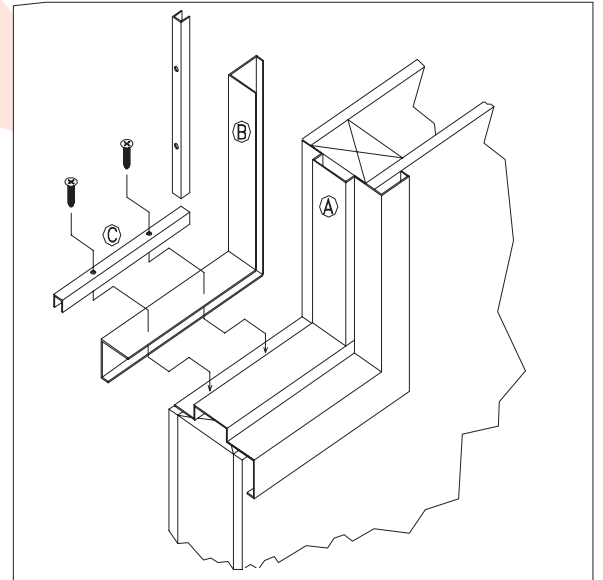
Lead Glass

High lead/barium content glass for x-ray protection providing a high quality, transparent, protective shield against x-ray radiation in medical, technical and research applications. Its high content of lead and barium gives optimum shielding against radiation energies generated by equipment operating in the range 100-300 KV. Standard lead equivalency is 2.0 mm (1/16") with a thickness of 8.0 mm (5/16") Higher equivalencies are available.



Lead-Lined Two-Piece Slip Frames

2-Piece slip lead-lined frames install in a similar way to telescopic view frames but differ in that they are manufactured for a specific throat dimension. Often these are used when larger throat dimensions are required or mullions are necessary. Constructed of 16 or 14 GA-Cold Rolled Steel or A60 Galvannealed. Profiles are power brake formed. Jambs, head and sills are assembled with tongue and slot connection. Miters accurately fitted, continuously welded and ground smooth. Frames are thoroughly cleaned after assembly and given a prime coat of rust-inhibiting primer paint, which is then air dried.



Lead-Lined Telescopic View Frames

MAYCO telescoping window frames are supplied fully lead-lined with an integral all-purpose telescoping section to accommodate all types of wall construction. Frames are designed to fit walls ranging from 4 inches to 6 1/4 inches thick. The standard 2-inch face x 1/2-inch deep face return is aesthetically pleasing and is compatible in appearance with most standard hollow metal hardware and fixtures. Constructed of 16-gauge steel, corners are fully welded and ground smooth. Frames are precision factory punched for reversible stops, which are predrilled and countersunk, which allows for adequate glazing with either one or two panes of 5/16" lead shielding glass or one pane of 9/16" lead shielding glass.

Mayco Industries-Birmingham

18 West Oxmoor Road Birmingham, AL 35209 Ph: 800-749-6061 Office: 205-942-4242 Fax: 205-945-8704

Mayco Industries-Granite City

1200 16th Street Granite City, IL 62040 Ph: 800-749-6061 Office: 618-451-4400 Fax: 618-451-9310

www.maycoindustries.com sales@maycoindustries.com